



# DEFINED PROTEIN PARTICLES AS SEEDS OF LIPID DROPLETS AND ADIPOGENESIS

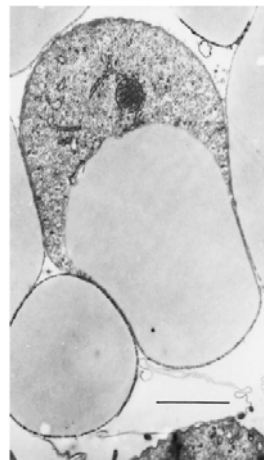
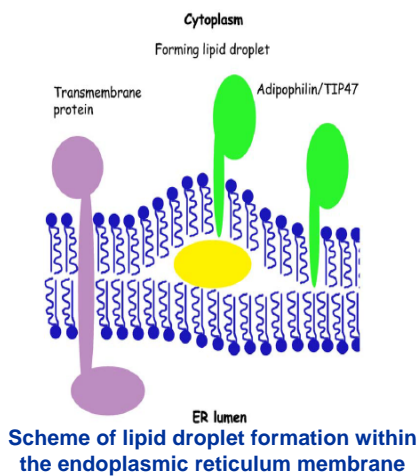
GUEST LECTURE by

**Hans Heid, PhD**

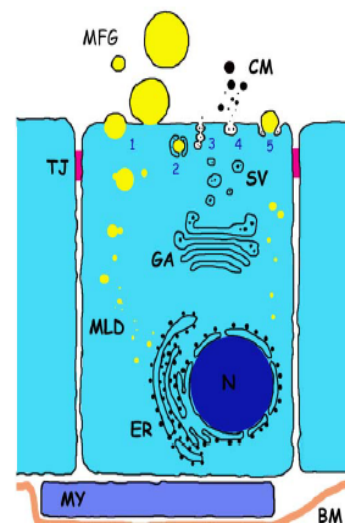
Helmholtz Group for Cell Biology  
German Cancer Research Center (DKFZ)  
Heidelberg / Germany

Friday, 18.11.2011  
15:00h

Department of Pathology, Lecture Hall  
Auenbruggerplatz 25, ground floor



Milk fat globules in the alveolar lumen in a specimen from rat mammary gland



The intracellular origin, growth, and secretion of milk fat globules

From: **Intracellular origin and secretion of milk fat globules**  
European Journal of Cell Biology 84 (2005) 245–258

Host: Prof. Johannes Haybäck

# DEFINED PROTEIN PARTICLES AS SEEDS OF LIPID DROPLETS AND ADIPOGENESIS

## Abstract

Lipid droplets (LD) i.e. spherical accumulations of apolar lipids and other hydrophobic substances, are generally surrounded by a thin cortical layer of specific amphiphilic proteins (APs), segregating the LDs from the mostly polar components of the cytoplasm. LDs are reported to be involved in many cellular processes, including lipid storage, membrane and other lipid material traffic, and signal transduction. We have studied these organelles in diverse cultured cells and tissues and have in particular characterized some of the associated AP proteins from an ancient gene family, identified in mammals, *Drosophila* and *Dictyostelium*. The sequence related LD-binding protein family, in mammals consisting of the proteins *Perilipin*, *Adipophilin*, *TIP47*, *MLDP* and *S3-12*, has been characterized for the biological specificities and the histodiagnostic value of these APs as markers of certain human diseases such as liposarcoma, lipoma, atherosclerosis, fatty liver steatosis and various tumors.

Using newly generated AP antibodies and improved LD and lipid complex isolation methods, we have enriched and characterized APs from human, rodent and bovine cell cultures and tissues, including adipogenic cells from human bone marrow and lipoaspirates, liver cells as well as various carcinoma cells. Lipid-AP complexes could be obtained in the top layer fractions of floating gradient separations of such cells and also in different combinations from somewhat higher densities fractions and were analyzed by ultracentrifugation, immunofluorescence microscopy, electron and immunoelectron microscopy, by freeze-fracture immuno-localization and with biochemical methods. Surprisingly we could identify different LD types - even in the same cell - by their AP patterns. The aim of our studies is to elucidate the molecular interactions between LDs and AP molecules as well as their potential regulatory roles during LD growth and the architectonic LD associations with cell components such as the vimentin intermediate filament arrays.

## Literature

1. Franke WW, Heid HW, Grund C, Winter S, Freudenstein C, Schmid E, Jarasch ED, Keenan TW. Antibodies to the major insoluble milk fat globule membrane-associated protein: specific location in apical regions of lactating epithelial cells. *J Cell Biol.* 1981. 89(3):485-94.
2. Franke WW, Hergt M, Grund C. Rearrangement of the vimentin cytoskeleton during adipose conversion: formation of an intermediate filament cage around lipid globules. *Cell.* 1987. 49(1):131-41.
3. Heid HW, Schnölzer M, Keenan TW. Adipocyte differentiation-related protein is secreted into milk as a constituent of milk lipid globule membrane. *Biochem J.* 1996. 320:1025-30.
4. Heid HW, Moll R, Schwetlick I, Rackwitz HR, Keenan TW. Adipophilin is a specific marker of lipid accumulation in diverse cell types and diseases. *Cell Tissue Res.* 1998. 294(2):309-21.
5. Heid HW, Keenan TW. Intracellular origin and secretion of milk fat globules. *Eur J Cell Biol.* 2005. 84(2-3):245-58.
6. Robenek H, Hofnagel O, Buers I, Lorkowski S, Schnoor M, Robenek MJ, Heid H, Troyer D, Severs NJ. Butyrophilin controls milk fat globule secretion. *Proc Natl Acad Sci U S A.* 2006. 103(27):10385-90.
7. Straub BK, Stoeffel P, Heid H, Zimbelmann R, Schirmacher P. Differential pattern of lipid droplet-associated proteins and de novo perilipin expression in hepatocyte steatogenesis. *Hepatology.* 2008. 47(6):1936-46.
8. Straub BK, Herpel E, Singer S, Zimbelmann R, Breuhahn K, Macher-Goeppinger S, Warth A, Lehmann-Koch J, Longerich T, Heid H, Schirmacher P. Lipid droplet-associated PAT-proteins show frequent and differential expression in neoplastic steatogenesis. *Mod Pathol.* 2010. 23(3):480-92.

## Hans Heid, PhD

Helmholtz Group for Cell Biology, A991

Head: Prof. Werner W. Franke

German Cancer Research Center (DKFZ), Heidelberg / Germany

### Curriculum vitae

- 1969 – 1974 Chemistry at the Technical University of Karlsruhe
- 1974 Chemistry Diploma, Technical University of Karlsruhe
- 1974 - 1977 Research and Teaching Assistantship at the Institute of Pharmaceutical Chemistry, University of Heidelberg
- 1977 – 1979 Pharmacy at the University of Heidelberg
- 1979 Pharmaceutical State Exam ("Pharmazeutisches Staatsexamen"), University of Heidelberg
- 1979 - 1983 Ph.D. (University of Heidelberg) at the German Cancer Research Center, Division of Cell and Tumor Biology; Supervisor: Prof. Werner W. Franke
- 1983 Ph.D. (Dr. rer. nat.) in Cell Biology, University of Heidelberg
- 1979 - 1980 Visiting Ph.D. student at the Research Department of Animal Science, University of Purdue, West Lafayette, IND, USA; Head: Prof. Thomas W. Keenan
- 1983 - 1986 Postdoctoral Position at the Division of Cell and Tumor Biology, German Cancer Research Center, Heidelberg; Head: Prof. Werner W. Franke
- 1986 Staff Scientist at the Division of Cell Biology, German Cancer Research Center, Heidelberg; Head: Prof. Werner W. Franke

### Publications

#### 1981

Franke WW, Heid HW, Grund C, Winter S, Freudenstein C, Schmid E, Jarasch ED, Keenan TW. Antibodies to the major insoluble milk fat globule membrane-associated protein: specific location in apical regions of lactating epithelial cells. *J Cell Biol.* 1981. 89(3):485-94.

Jarasch ED, Grund C, Bruder G, Heid HW, Keenan TW, Franke WW. Localization of xanthine oxidase in mammary-gland epithelium and capillary endothelium. *Cell.* 1981. 25(1):67-82.

#### 1982

Keenan TW, Heid HW, Stadler J, Jarasch E, Franke WW. Tight attachment of fatty acids to proteins associated with milk lipid globule membrane. *Eur J Cell Biol.* 1982. 26(2):270-6.

Bruder G, Heid H, Jarasch ED, Keenan TW, Mather IH. Characteristics of membrane-bound and soluble forms of xanthine oxidase from milk and endothelial cells of capillaries. *Biochim Biophys Acta.* 1982. 701(3):357-69.

#### 1983

Bruder G, Heid HW, Jarasch ED, Mather IH. Immunological identification and determination of xanthine oxidase in cells and tissues. *Differentiation.* 1983;23(3):218-25.

Heid HW, Winter S, Bruder G, Keenan TW, Jarasch ED. Butyrophilin, an apical plasma membrane-associated glycoprotein characteristic of lactating mammary glands of diverse species. *Biochim Biophys Acta.* 1983. 728(2):228-38.

#### 1984

Mather IH, Jarasch ED, Bruder G, Heid HW, Mephram TB. Protein synthesis in lactating guinea-pig mammary tissue perfused in vitro. I. Radiolabelling of membrane and secretory proteins. *Exp Cell Res.* 1984. 151(1):208-23.

Mather IH, Bruder G, Jarasch ED, Heid HW, Johnson VG. Protein synthesis in lactating guinea-pig mammary tissue perfused in vitro. II. Biogenesis of milk-fat-globule membrane proteins. *Exp Cell Res.* 1984. 151(1):277-82.

Bruder G, Jarasch ED, Heid HW. High concentrations of antibodies to xanthine oxidase in human and animal sera. Molecular characterization. *J Clin Invest.* 1984. 74(3):783-94.

## 1985

Johnson VG, Greenwalt DE, Heid HW, Mather IH, Madara PJ. Identification and characterization of the principal proteins of the fat-globule membrane from guinea-pig milk. *Eur J Biochem.* 1985. 151(2):237-44.

Moore A, Boulton AP, Heid HW, Jarasch ED, Craig RK. Purification and tissue-specific expression of casein kinase from the lactating guinea-pig mammary gland. *Eur J Biochem.* 1985. 152(3):729-37.

## 1986

Heid HW, Werner E, Franke WW. The complement of native alpha-keratin polypeptides of hair-forming cells: a subset of eight polypeptides that differ from epithelial cytokeratins. *Differentiation.* 1986. 32(2):101-19.

Jarasch ED, Bruder G, Heid HW. Significance of xanthine oxidase in capillary endothelial cells. *Acta Physiol Scand Suppl.* 1986. 548:39-46.

Nagle RB, Böcker W, Davis JR, Heid HW, Kaufmann M, Lucas DO, Jarasch ED. Characterization of breast carcinomas by two monoclonal antibodies distinguishing myoepithelial from luminal epithelial cells. *J Histochem Cytochem.* 1986. 34(7):869-81.

Knapp AC, Franke WW, Heid H, Hatzfeld M, Jorcano JL, Moll R. Cytokeratin No. 9, an epidermal type I keratin characteristic of a special program of keratinocyte differentiation displaying body site specificity. *J Cell Biol.* 1986. 103(2):657-67.

## 1987

Moll I, Heid H, Franke WW, Moll R. Distribution of a special subset of keratinocytes characterized by the expression of cytokeratin 9 in adult and fetal human epidermis of various body sites. *Differentiation.* 1987. 33(3):254-65.

## 1988

Heid HW, Moll I, Franke WW. Patterns of expression of trichocytic and epithelial cytokeratins in mammalian tissues. I. Human and bovine hair follicles. *Differentiation.* 1988. 37(2):137-57.

Heid HW, Moll I, Franke WW. Patterns of expression of trichocytic and epithelial cytokeratins in mammalian tissues. II. Concomitant and mutually exclusive synthesis of trichocytic and epithelial cytokeratins in diverse human and bovine tissues (hair follicle, nail bed and matrix, lingual papilla, thymic reticulum). *Differentiation.* 1988. 37(3):215-30.

Moll I, Heid H, Moll R. Cytokeratin analysis of pilomatrixoma: changes in cytokeratin-type expression during differentiation. *J Invest Dermatol.* 1988. 91(3):251-7.

Moll I, Heid HW, Franke WW, Moll R. Patterns of expression of trichocytic and epithelial cytokeratins in mammalian tissues. III. Hair and nail formation during human fetal development. *Differentiation.* 1988. 39(3):167-84.

## 1993

Dairkee S, Heid HW. Cytokeratin profile of immunomagnetically separated epithelial subsets of the human mammary gland. *In Vitro Cell Dev Biol Anim.* 1993. 29A(5):427-32.

Hess H, Heid H, Franke WW. Molecular characterization of mammalian cylicin, a basic protein of the sperm head cytoskeleton. *J Cell Biol.* 1993. 122(5):1043-52.

Schäfer S, Troyanovsky SM, Heid HW, Eshkind LG, Koch PJ, Franke WW. Cytoskeletal architecture and epithelial differentiation: molecular determinants of cell interaction and cytoskeletal filament anchorage. *C R Acad Sci III.* 1993. 316(11):1316-23.

Langbein L, Heid HW, Moll I, Franke WW. Molecular characterization of the body site-specific human epidermal cytokeratin 9: cDNA cloning, amino acid sequence, and tissue specificity of gene expression. *Differentiation.* 1993. 55(1):57-71. Erratum in: *Differentiation.* 1994. 55(2):164.

## 1994

Franke WW, Koch PJ, Schäfer S, Heid HW, Troyanovsky SM, Moll I, Moll R. The desmosome and the syndesmos: cell junctions in normal development and in malignancy. *Princess Takamatsu Symp.* 1994;24:14-27. Review.

Strand D, Jakobs R, Merdes G, Neumann B, Kalmes A, Heid HW, Husmann I, Mechler BM. The *Drosophila* lethal(2)giant larvae tumor suppressor protein forms homo-oligomers and is associated with nonmuscle myosin II heavy chain. *J Cell Biol.* 1994. 127(5):1361-73.

Ruffing M, Heid H, Kleinschmidt JA. Mutations in the carboxy terminus of adeno-associated virus 2 capsid proteins affect viral infectivity: lack of an RGD integrin-binding motif. *J Gen Virol.* 1994. 75 (Pt 12):3385-92.

Jordan P, Heid H, Kinzel V, Kübler D. Major cell surface-located protein substrates of an ecto-protein kinase are homologs of known nuclear proteins. *Biochemistry.* 1994. 33(49):14696-706.

Schmidt A., H.W.Heid, S. Schäfer, U.A. Nuber, R. Zimbelmann, and W.W. Franke. 1994. Desmosomes and cytoskeletal architecture in epithelial differentiation: cell type-specific plaque components and intermediate filament anchorage. *Eur. J. of Cell Biol.*, 65, 229-245.

Heid H.W., A. Schmidt, R. Zimbelmann, S. Schäfer, S. Winter-Simanowski, M. Keith, S. Stumpp, U. Figge, M. Schnölzer, and W.W. Franke. 1994. Cell type-specific desmosomal plaque proteins of the plakoglobin family: plakophilin 1 ("band 6 protein"). *Differentiation*, 58,113-131.

#### 1995

Hess H., H. Heid, R. Zimbelmann and W.W. Franke. 1995. The protein complexity of the cytoskeleton of bovine and human sperm heads: The identification and characterization of cylicin II. *Exp. Cell Res.* 218, 174-182.

Von Bülow, M., H.W. Heid, H. Hess, and W.W. Franke. 1995. Molecular nature of Calicin, a major basic Protein of the mammalian sperm head cytoskeleton. *Exp. Cell Res.* 219, 407-413.

#### 1996

Franke WW, Stehr S, Stumpp S, Kuhn C, Heid H, Rackwitz HR, Schnölzer M, Baumann R, Holzhausen HJ, Moll R. Specific immunohistochemical detection of cardiac/fetal alpha-actin in human cardiomyocytes and regenerating skeletal muscle cells. *Differentiation*. 1996. 60(4):245-50.

Heid H.W., M. Schnölzer, and T.W. Keenan. 1996. Adipocyte differentiation-related protein is secreted into milk as a constituent of milk lipid globule membrane. *Biochemical J.* 320,1025-1030.

#### 1997

Bini, L., H. Heid, S. Liberatori, G. Geier, V. Pallini, and R. Zwillig. 1997. Two-dimensional gel electrophoresis of *Caenorhabditis elegans* homogenates and identification of protein spots by microsequencing. *Electrophoresis*. 18 (3-4), 557-562.

Alsheimer, M., Y. Imamichi, H. Heid, and R. Benavente. 1997. Molecular characterization and expression pattern of XY body-associated protein XY40 of the rat. *Chromosoma* 106 (5), 308-314.

Mundel, P., H.W. Heid, T.M. Mundel, M. Krüger, J. Reiser, and W.Kriz. 1997. Synaptopodin: an actin-associated protein in telencephalic dendrites and renal podocytes. *J. Cell Biol.* 139, 193-204.

Pause, B., P. Distelkötter, H. Heid, and W.W. Just. 1997. Cytosolic factors mediate protein insertion into the peroxisomal membrane. *Febs Letters* 414, 95-98.

Thai, T.-P., H. Heid, H.-R. Rackwitz, A. Hunziker, K. Gorgas, and W.W. Just. 1997. Ether lipid biosynthesis: Isolation and molecular characterization of human dihydroxyacetonephosphate acyltransferase. *Febs letters* 420, 205-211.

#### 1998

Heid H.W., R. Moll, I. Schwetlick, H.-R. Rackwitz, and T.W. Keenan. 1998. Adipophilin, is a specific marker of lipid accumulation in diverse cell types and diseases. *Cell & Tissue Res.* 294, 309-321.

Pfrepper K.-P., H.-R. Rackwitz, M. Schnölzer, H. Heid, M. Löchelt and R.M. Flügel. 1998. Molecular characterization of proteolytic processing of the pol proteins of human foamy virus reveals novel features of the viral protease. *J. of Virology* 72, 7648-7652.

#### 1999

Geier G., H.-J. Banaj, H. Heid, L. Bini, V. Pallini and R. Zwillig. 1999. Aspartyl proteases in *C. elegans* : Isolation, identification and characterization by a combined use of affinity chromatography, two-dimensional gel electrophoresis, microsequencing and databank analysis. *Eur. J. Biochem.* 264 (3), 872-879.

Li M., D. Strand, A. Krehan, W. Pyerin, H. Heid, B. Neumann and B.M. Mechler. 1999. Casein kinase 2 binds and phosphorylates the nucleosome assembly protein-1 (NAP1) in *Drosophila melanogaster*. *J. Mol. Biol.* 293(5), 1067-1084.

Mundel TM, Heid HW, Mahuran DJ, Kriz W, Mundel P.1999. Ganglioside GM2-activator protein and vesicular transport in kidney collecting duct intercalated cells. *J. American Society of Nephrology* 10 (3), 435-443.

Pfrepper K.I., M. Lochelt, H.-R. Rackwitz, M. Schnölzer, H. Heid and R.M. Flügel. 1999. Molecular characterization of proteolytic processing of the gag proteins of human spumavirus. *J. of Virology.* 73(9), 7907-7911.

Stumptner C., H. Heid, A. Fuchsbichler, H. Hauser, HJ. Mischinger, K. Zatloukal and H. Denk. 1999. Analysis of intracytoplasmic hyaline bodies in a hepatocellular carcinoma: demonstration of p62 as major constituent. *J. Am. Pathology*, Vol.154 (6), 1701-1710.

Zhang Y., D.D. Bak, H. Heid and K. Geider. 1999. Molecular characterization of a protease secreted by *Erwinia amylovora*. *J. Mol. Biol.* 289, 1239-1251.

## 2000

Keenan T.W., H.-R. Rackwitz, S. Winter and H.W. Heid. 2000. Nuclear coactivator protein P100 is abundant in endoplasmic reticulum and lipid droplets of milk secreting cells. *Biochim Biophys Acta* 1519: 84-90.

Kobayashi N., H.W. Heid, T. Sakai, W. Kriz, G. Huber and P. Mundel. 2000. Molecular characterization reveals the identity of microtubule associated proteins MAP3 and MAP4. *Biochem Biophys Res Commun.* 268(2):306-9.

Alsheimer M., von Glasenapp E., Schnolzer M., Heid H., Benavente R. 2000. Meiotic lamin C2: the unique amino-terminal hexapeptide GNAEGR is essential for nuclear envelope association. *Proc Natl Acad Sci U S A.* 97(24):13120-5.

## 2001

Volkman M., Martin L., Baurle A., Heid H., Strausburg C.P., Trautwein C., Fiehn W., Manns MP. 2001. Soluble liver antigen: Isolation of a 35-kd recombinant protein (SLA-p35) specifically recognizing sera from patients with autoimmune hepatitis. *Hepatology* 33(3): 591-596.

Kneissel S., Franke W.W., Gall J.G., Heid H., Reidenbach S., Schnölzer M., Spring H., Zentgraf H., Schmidt-Zachmann M. 2001. A novel kind of karyoskeletal protein: Characterization of protein NO145, the major component of the nucleolar cortical skeleton in *Xenopus* oocytes. *J. Mol. Biol.* 12: 3904-3918.

## 2002

Zatloukal K., Stumptner C., Fuchsbichler A., Heid H., Schnölzer M., Kenner L., Kleinert R., Prinz M., Aguzzi A., Denk H. 2002. P62 a common component of cytoplasmic inclusions in protein aggregation diseases. *Am. J. Pathology* 160(1): 255-263.

Heid H.W., Ulrike Figge, Stefanie Winter, Caecilia Kuhn, Ralf Zimbelmann, and Werner W. Franke. 2002. Novel Actin-Related Proteins Arp-T1 and Arp-T2 as Components of the Cytoskeletal Calyx of the Mammalian Sperm Head. *Exp. Cell Res.* 279: 177-187.

Stumptner C, Fuchsbichler A, Heid H, Zatloukal K, Denk H. 2002. Mallory body--a disease-associated type of sequestosome. *Hepatology.* 35(5):1053-62

## 2004

Eilbracht J, Reichenzeller M, Hergt M, Schnölzer M, Heid H, Stöhr M, Franke WW, Schmidt-Zachmann MS. 2004. NO66, a highly conserved dual location protein in the nucleolus and in a special type of synchronously replicating chromatin. *Mol Biol Cell.* 15(4):1816-32.

Strand S, Vollmer P, van den Abeelen L, Gottfried D, Alla V, Heid H, Kuball J, Theobald M, Galle PR, Strand D. 2004. Cleavage of CD95 by matrix metalloproteinase-7 induces apoptosis resistance in tumour cells. *Oncogene.* 29;23(20):3732-6.

## 2005

Heid HW, Keenan TW. 2005. Intracellular origin and secretion of milk fat globules. *Eur J Cell Biol.* 84(2-3):245-58. Review.

Lay D, L Grosshans B, Heid H, Gorgas K, Just WW. 2005. Binding and functions of ADP-ribosylation factor on mammalian and yeast peroxisomes. *J Biol Chem.* 14;280(41):34489-99.

## 2006

Robenek H, Hofnagel O, Buers I, Lorkowski S, Schnoor M, Robenek MJ, Heid H, Troyer D, Severs NJ. 2006. Butyrophilin controls milk fat globule secretion. *Proc Natl Acad Sci U S A.* 5;103(27):10385-90.

Franke WW, Heid H. 2006. Pitfalls, errors and risks of false-positive results in urinary EPO drug tests. *Clin Chim Acta.* Nov;373(1-2):189-90.

## 2007

Kübler D, Gosenca D, Wind M, Heid H, Friedberg I, Jahnen-Dechent W, Lehmann WD. 2007. Proteolytic processing by matrix metalloproteinases and phosphorylation by protein kinase CK2 of fetuin-A, the major globulin of fetal calf serum. *Biochimie.* 89(3):410-8.

Hummel S, Christian S, Osanger A, Heid H, Nimpf J, Schneider WJ. 2007. Identification of a novel chondroitin-sulfated collagen in the membrane separating theca and granulosa cells in chicken ovarian follicles: the granulosa-theca cell interface is not a bona fide basement membrane. *J Biol Chem.* 282(11):8011-8.

## 2008

Straub BK, Stoeffel P, Heid H, Zimbelmann R, Schirmacher P. 2008. Differential pattern of lipid droplet-associated proteins and de novo perilipin expression in hepatocyte steatogenesis. *Hepatology.* 47(6):1936-46.

Schroeter MM, Beall B, Heid HW, Chalovich JM. 2008. The actin binding protein, fesselin, is a member of the synaptopodin family. *Biochem Biophys Res Commun.* 371(3):582-6.

Alla V, Kashyap A, Gregor S, Theobald M, Heid H, Galle PR, Strand D, Strand S. 2008. Human leukocyte elastase counteracts matrix metalloproteinase-7 induced apoptosis resistance of tumor cells. *Cancer Lett.* Sep 18;268(2):331-9.

Schroeter MM, Beall B, Heid HW, Chalovich JM. 2008. In vitro characterization of native mammalian smooth-muscle protein synaptopodin 2. *Biosci Rep.* 28(4):195-203.

#### 2009

Komljenovic D, Sandhoff R, Teigler A, Heid H, Just WW, Gorgas K. 2009. Disruption of blood-testis barrier dynamics in ether-lipid-deficient mice. *Cell Tissue Res.* 337(2):281-99.

#### 2010

Moosmeier MA, Bulkescher J, Reed J, Schnölzer M, Heid H, Hoppe-Seyler K, Hoppe-Seyler F. 2010. Transtactin: a universal transmembrane delivery system for Strep-tag II-fused cargos. *J Cell Mol Med.* 14(7):1935-45.

Volkman M, Luithle D, Zentgraf H, Schnölzer M, Fiedler S, Heid H, Schulze-Bergkamen A, Strassburg CP, Gehrke SG, Manns MP. 2010. SLA/LP/tRNP((Ser)Sec)antigen in autoimmune hepatitis: identification of the native protein in human hepatic cell extract. *J Autoimmun.* 34(1):59-65.

Straub BK, Herpel E, Singer S, Zimbelmann R, Breuhahn K, Macher-Goeppinger S, Warth A, Lehmann-Koch J, Longerich T, Heid H, Schirmacher P. 2010. Lipid droplet-associated PAT-proteins show frequent and differential expression in neoplastic steatogenesis. *Mod Pathol.* 23(3):480-92.

#### 2011

Pieperhoff S, Rickelt S, Heid H, Claycomb WC, Zimbelmann R, Kuhn C, Winter-Simanowski S, Kuhn C, Frey N, Franke WW. 2011. The plaque protein myozap identified as a novel major component of adhering junctions in endothelia of the blood and the lymph vascular systems. *J Cell Mol Med.* in press